



Arcadia Lake Master Plan

Update Meeting – March 2023





AGENDA

- Introductions
- Where are we in the process?
- Public survey results
- Planned amenities
- Next steps

Schedule

May-Aug

1.

Data
Collection

Existing Facilities
Data

2.

Facility
Assessments

Campus
Interviews, On-
Site Investigations,

3.

Visioning +
Educational
Framework

Objectives,
Expectations,
Drivers, and
Outcomes

4.

Master
Plan
Development

Analyze Data/
Identify Adequacy
& Deficiencies,
Master Planning

5.

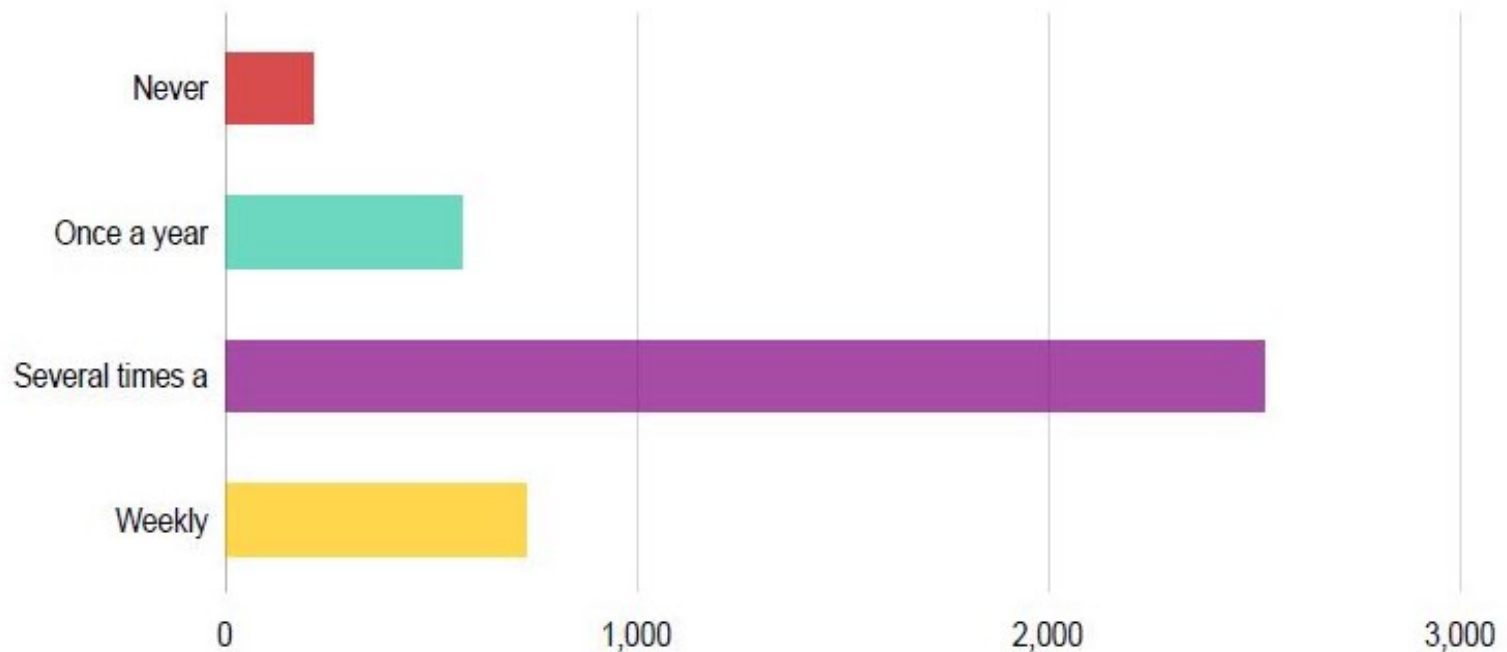
Implementation
Plan

Prioritize,
Implementation
Cost Estimate



Final Plan
May

How often do you visit Arcadia Lake? *



Answers

Count

Percentage

Never

209

5.19%

Once a year

573

14.22%

Several times a year

2,521

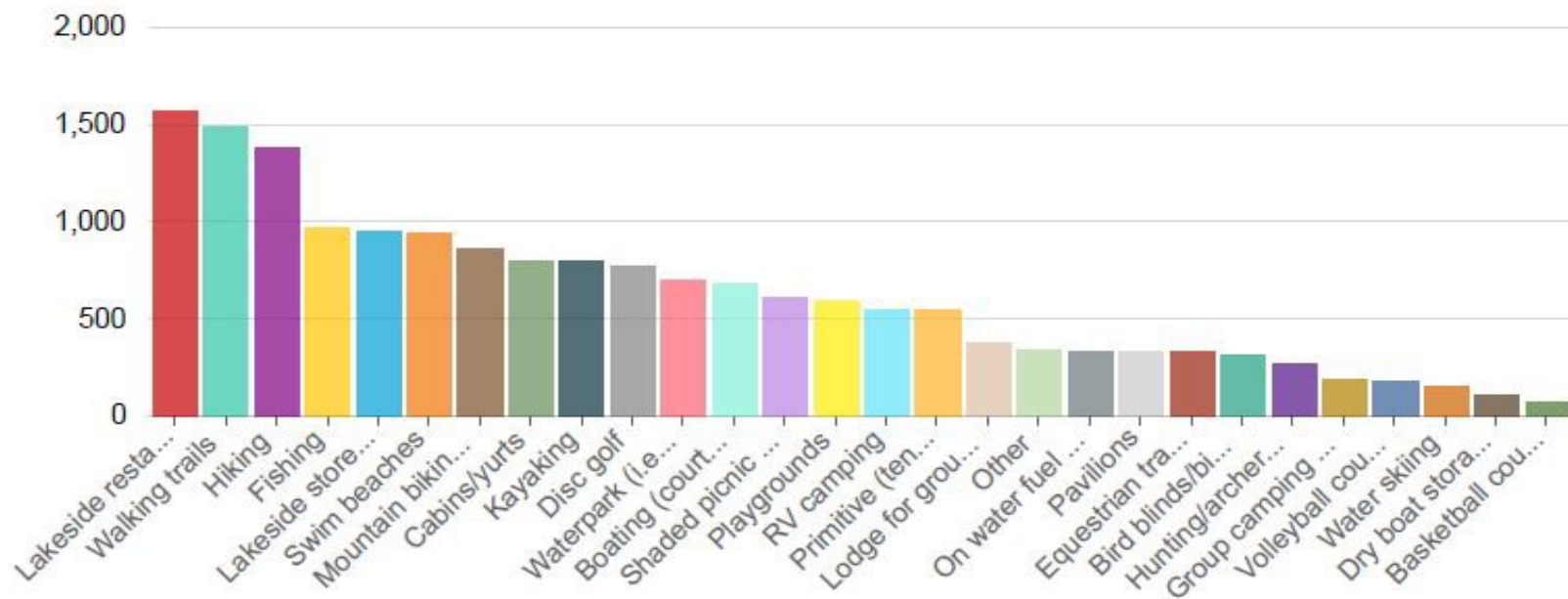
62.57%

Weekly

727

18.04%

Please select your top 5 new or improved amenities that you would like to see funded at...



Answers

Count

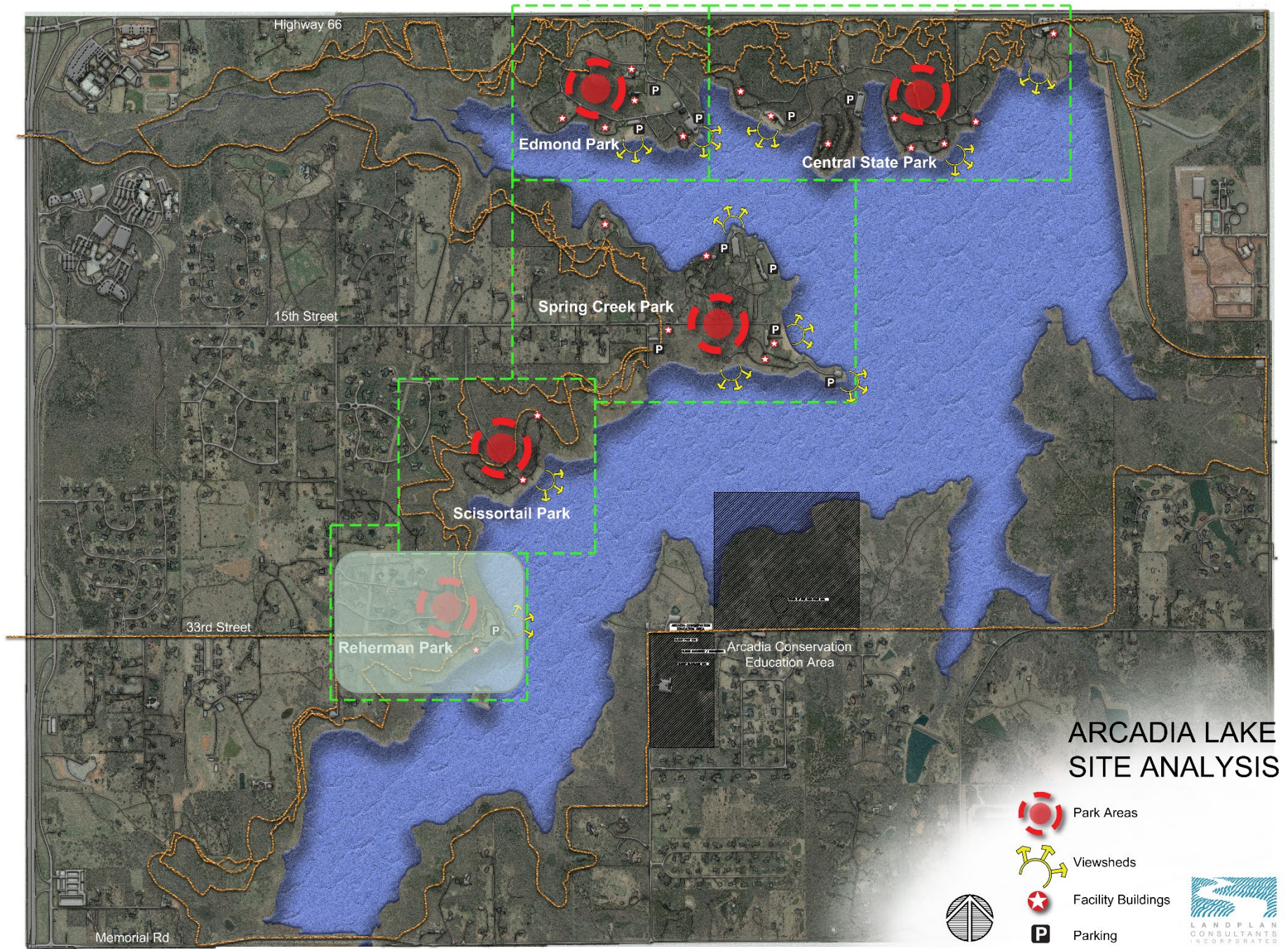
Percentage

Lakeside restaurant	1,575	39.09%
Walking trails	1,493	37.06%
Hiking	1,386	34.4%
Fishing	968	24.03%
Lakeside store (with bait)	953	23.65%
Swim beaches	948	23.53%


Access (parking, ADA)	20 comments
Boats (rentals, docks)	7 comments
Camping (utilities, reservations)	12 comments
Cost (no fee)	8 comments
Disc Golf	4 comments
Dog Areas	7 comments
Dredging Lake	5 comments
Fishing (more docks)	14 comments
Food	6 comments
Hunting/Archery	6 comments
Marina	7 comments
Nature (keep natural)	25 comments
Paddle (boards/boats)	3 comments
Parking	3 comments
Passholders (express lane)	7 comments
Pest Control	2 comments
Pickleball	3 comments
Reservations	15 comments
Restrooms (upkeep, showers)	40 comments
Skate Activities	3 comments
Trails	67 comments
Trash	17 comments
Misc	16 comments

Vision - Balanced Results





ARCADIA LAKE SITE ANALYSIS

-  Park Areas
-  Viewsheds
-  Facility Buildings
-  Parking

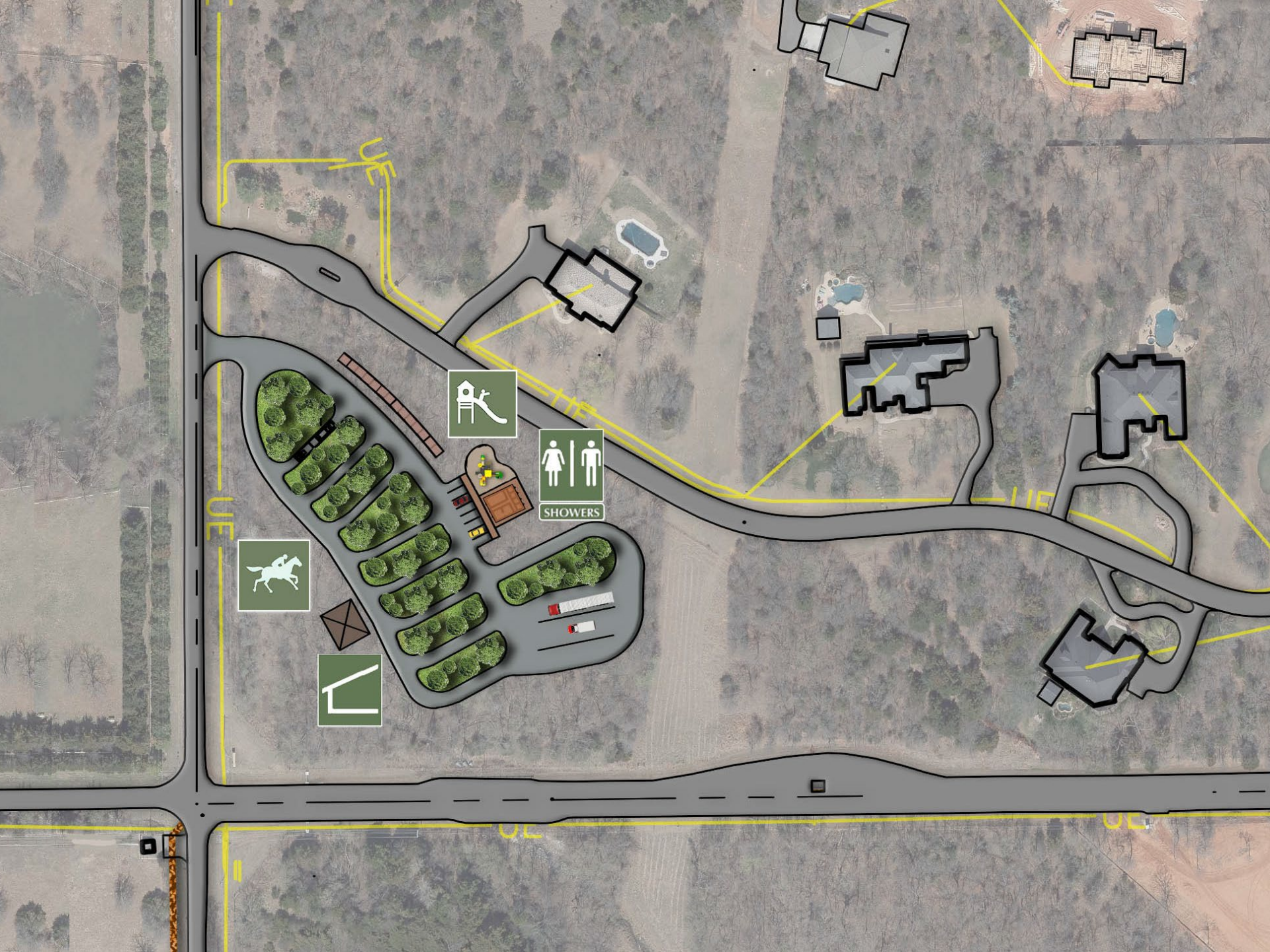


New
Equestrian
Area

Carl
Rehrman
Park

LEGEND:

	EQUESTRIAN AREA		BOAT RAMP
	PICNIC PAVILLION		PICNIC TABLE
	PLAYGROUND		PICNIC TABLE WITH SHADE STRUCTURE
	RESTROOM		PARKING





New
Equestrian
Area

Carl
Rehrman
Park

LEGEND:

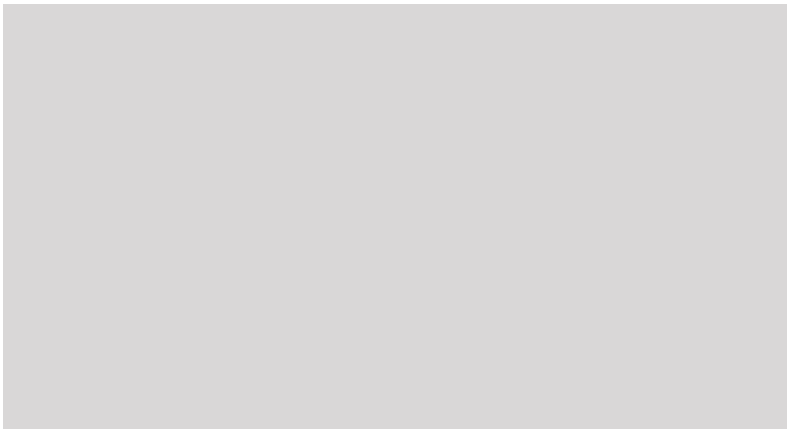
	EQUESTRIAN AREA		BOAT RAMP
	PICNIC PAVILION		PICNIC TABLE
	PLAYGROUND		PICNIC TABLE WITH SHADE STRUCTURE
	RESTROOM		PARKING

Reherman Park
Carl Reherman Park

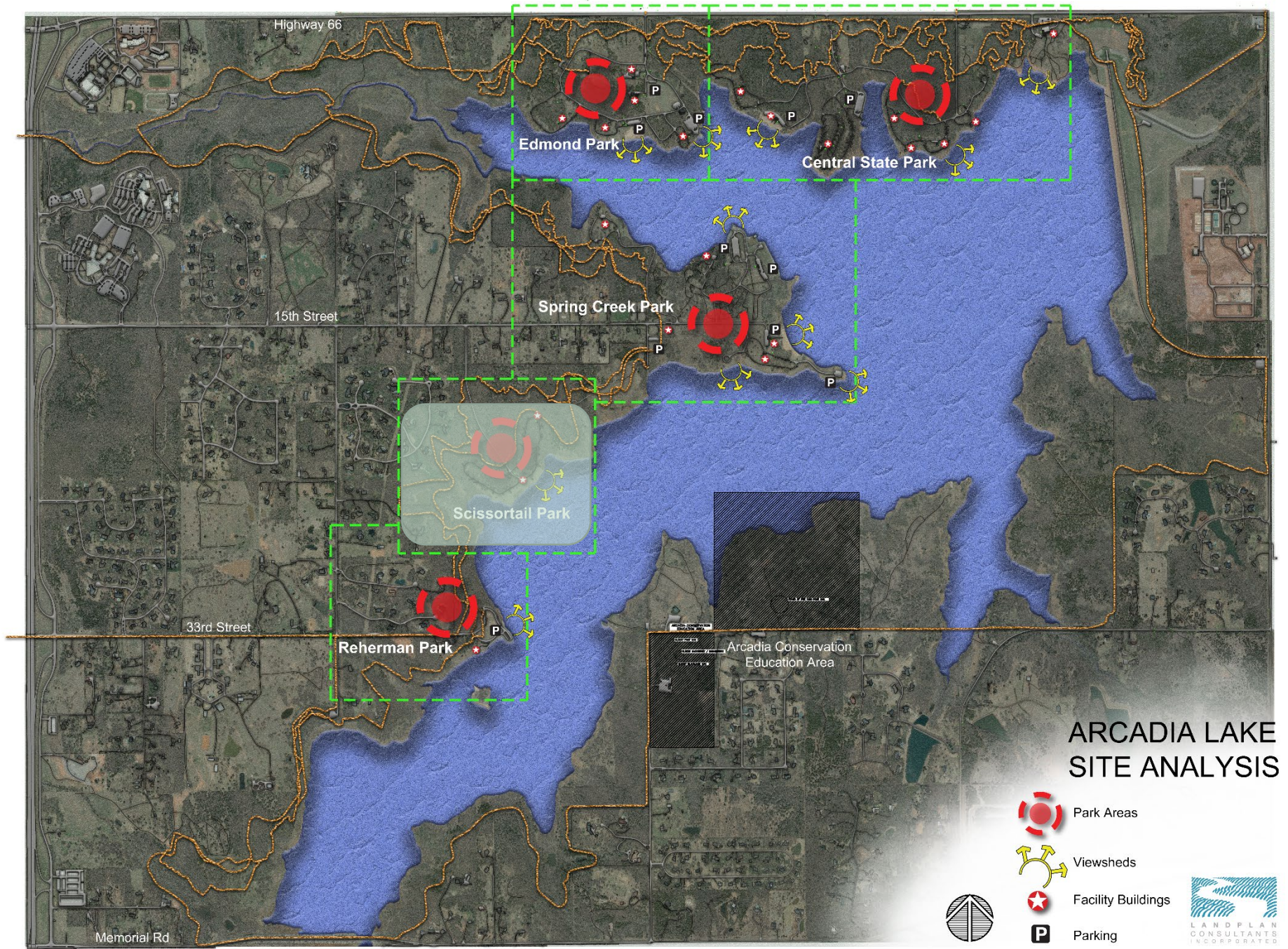












ARCADIA LAKE SITE ANALYSIS

-  Park Areas
-  Viewsheds
-  Facility Buildings
-  Parking



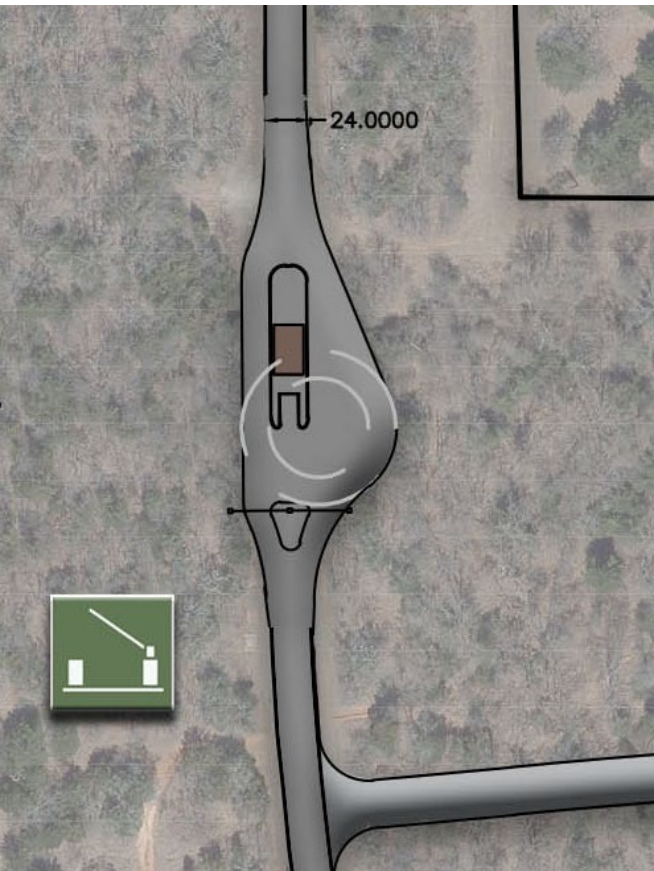
Park
Entrance

RV
Camping

Maintenance
and Pavilion

LEGEND

-  RV CAMPING SITE
-  ENTRY GATE
-  MAINTENANCE





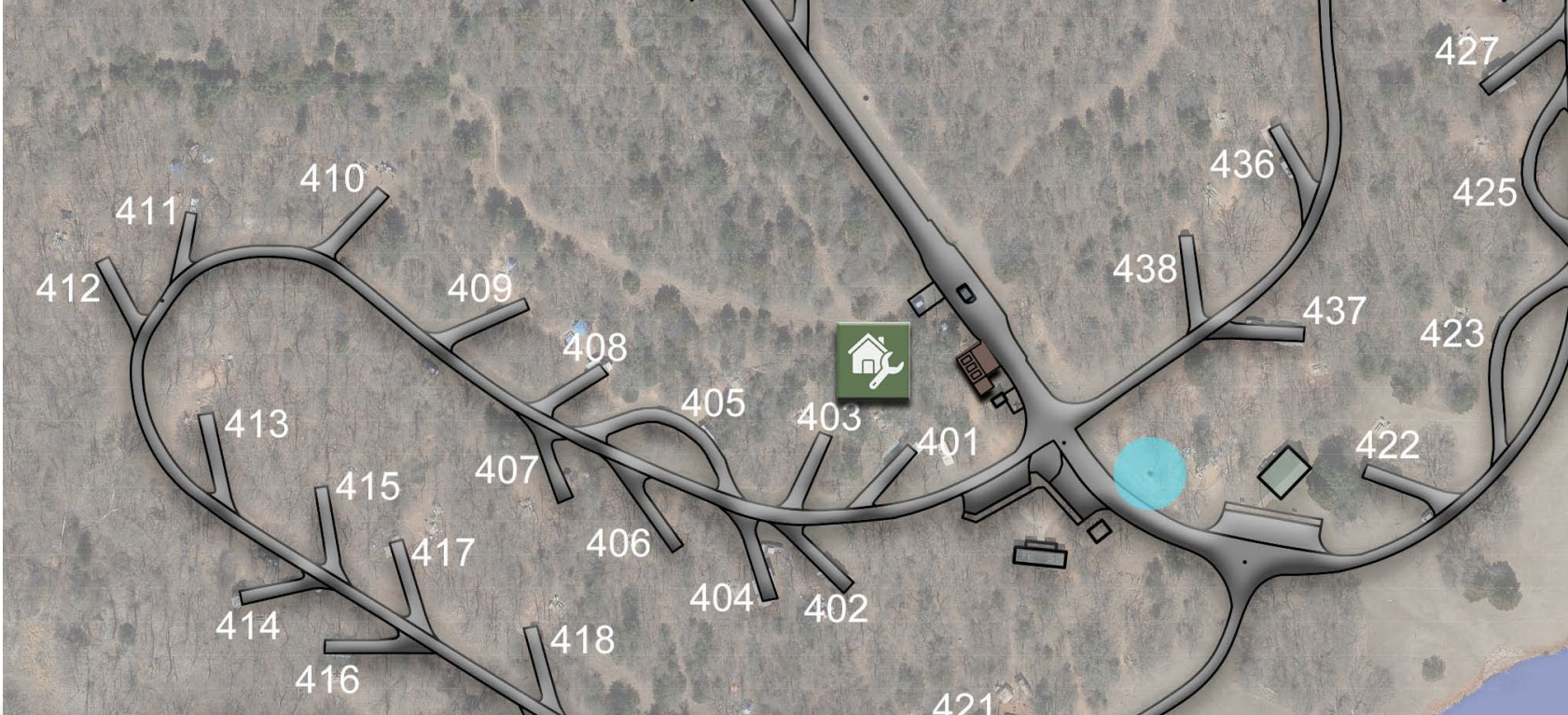
Park
Entrance

RV
Camping

Maintenance
and Pavilion

LEGEND

-  RV CAMPING SITE
-  ENTRY GATE
-  MAINTENANCE



Highway 66

15th Street

33rd Street

Memorial Rd

Edmond Park

Central State Park

Spring Creek Park

Scissortail Park

Reherman Park

Arcadia Conservation Education Area

ARCADIA LAKE SITE ANALYSIS



Park Areas



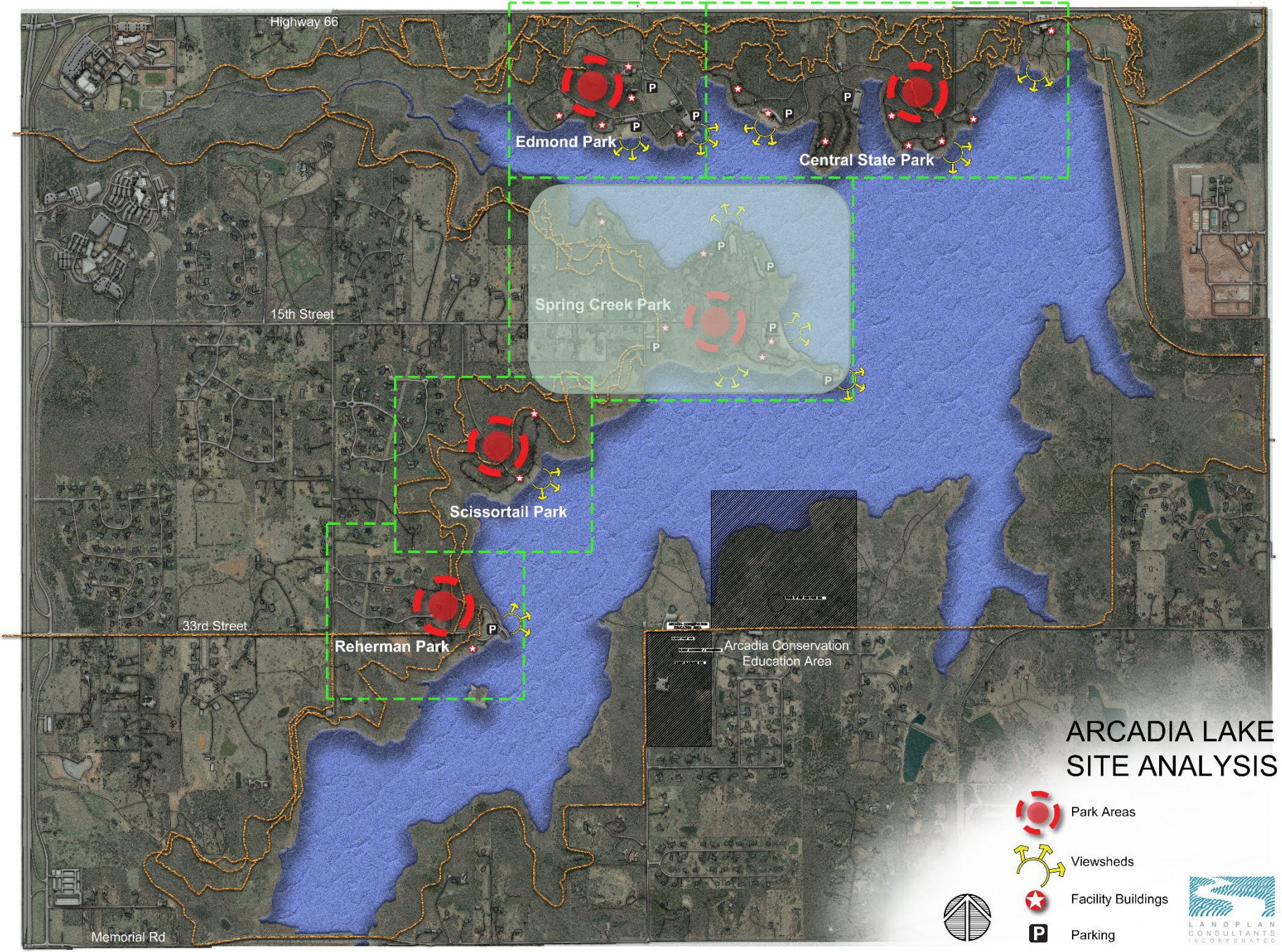
Viewsheds



Facility Buildings



Parking





Restroom

ADA Dock

Fuel Dock

Picnic Areas

Park Entrance/
Store

Equestrian
Parking

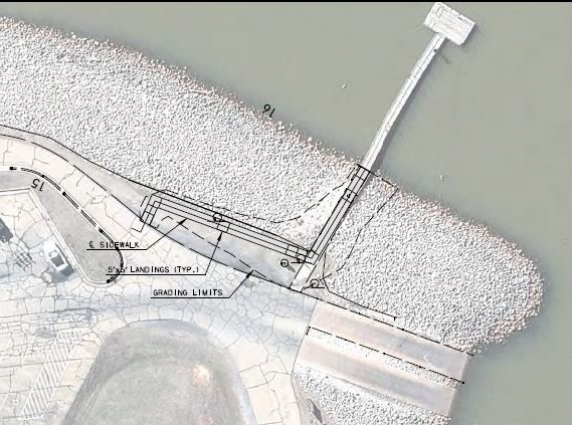
Glamping

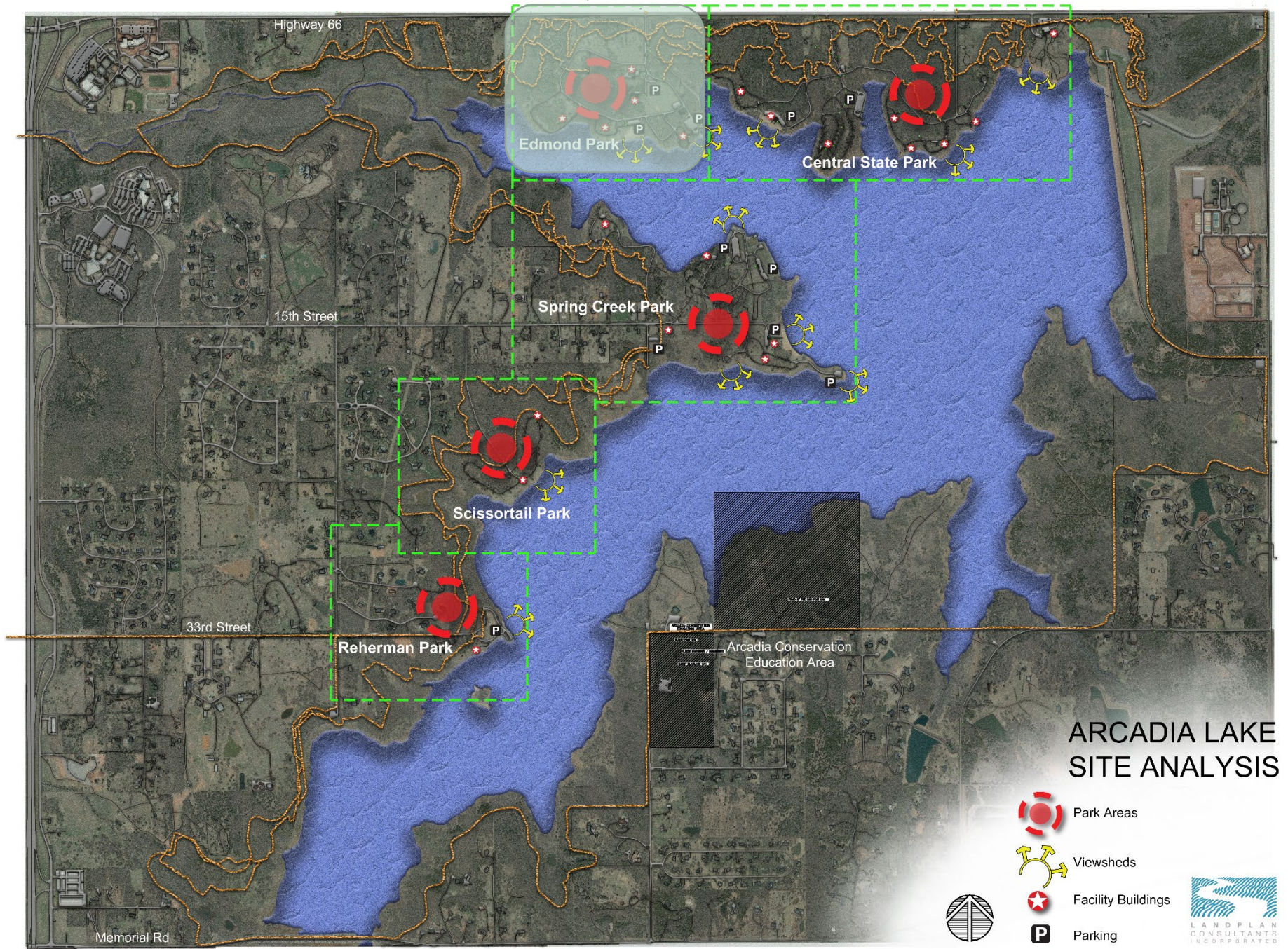
Beach
And
Parking












ARCADIA LAKE SITE ANALYSIS

-  Park Areas
-  Viewsheds
-  Facility Buildings
-  Parking



Future
Police
Substation

Park Entry/
Boat Staging

Group
Camp
Area

Lake
Maintenance
Facility

Fishing
Pond

Multiuse
Field

Camping

Beach
Improvements

ADA Kayak
Access Dock

Maintenance/Police
Dock

Courtesy
Dock

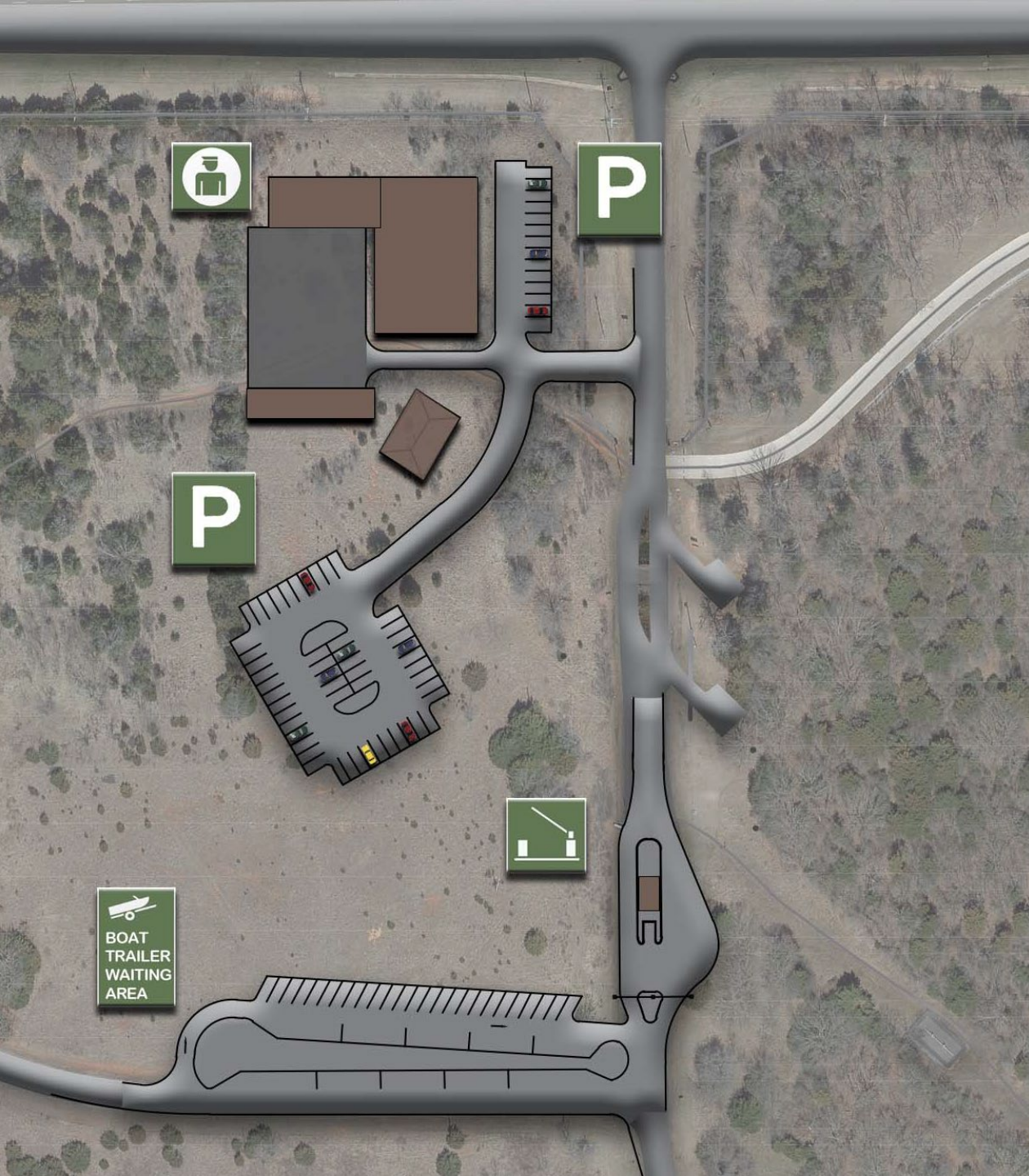


Future
Police
Substation

Park Entry/
Boat Staging



- ADA Kayak Access Dock
- Maintenance/Police Dock
- Courtesy Dock





Lake
Maintenance
Facility

Multiuse
Field

P

P

P

P

P

P

P

P

P

P

1
2
3
4
5
6
7
8
9
10
11
12
13
14
15
16
17
18
19
20
21
22

ADA Kayak
Access Dock
Maintenance/Police
Dock
Courtesy
Dock

BOAT
TRAILER
WAITING
AREA

PAVILION

BOYS
COURSE

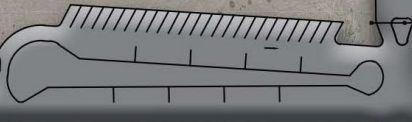
FOOD
SUPPLY

SLIDE
WITH
CLIMBING
BOULDER

BOAT TRAILER WAITING AREA

37 parking spaces

P







Beach Improvements

P

FOOD SUPPLY

SLIDE WITH CLIMBING BOULDER

BOAT TRAILER WAITING AREA

PAVILION

BOYS COURSE

27 ENTRY SPACE

ADA Kayak Access Dock

Maintenance/Police Dock

Courtesy Dock

- 1
- 2
- 3
- 4
- 5
- 6
- 7
- 8
- 9
- 10
- 11
- 12
- 13
- 14
- 15
- 16
- 17
- 18
- 19
- 20
- 21
- 22



P

FOOD SUPPLY



SLIDE WITH CLIMBING BOULDER







Group
Camp
Area

Fishing
Pond

Camping

BOAT
TRAILER
WAITING
AREA

27
entry
space

FOOD
SUPPLY

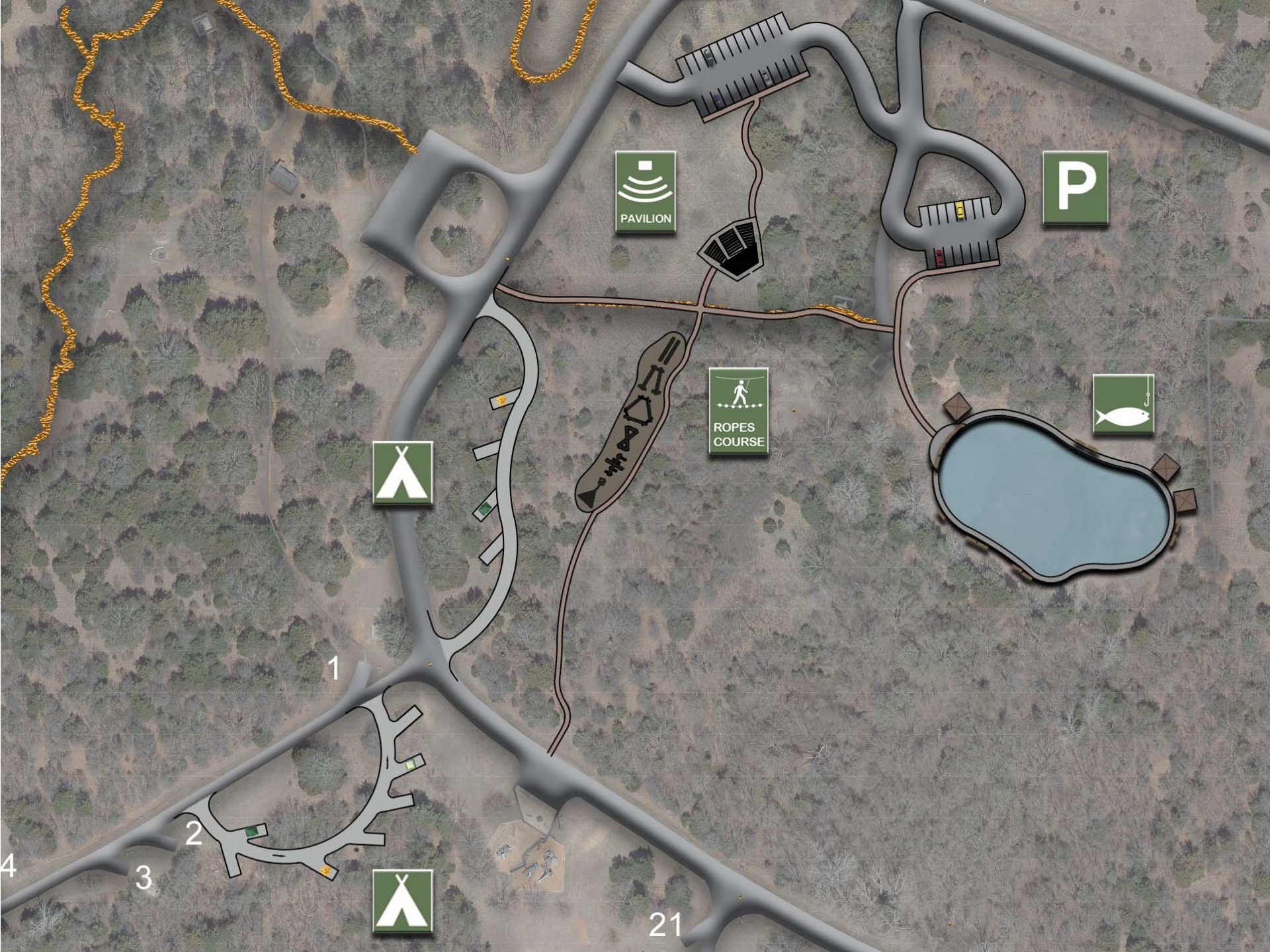
SLIDE
WITH
CLIMBING
BOULDER

ADA Kayak
Access Dock

Maintenance/Police
Dock

Courtesy
Dock

- 1
- 2
- 3
- 4
- 5
- 6
- 7
- 8
- 9
- 10
- 11
- 12
- 13
- 14
- 15
- 16
- 17
- 18
- 19
- 20
- 21
- 22



PAVILION

P

ROPES COURSE



1

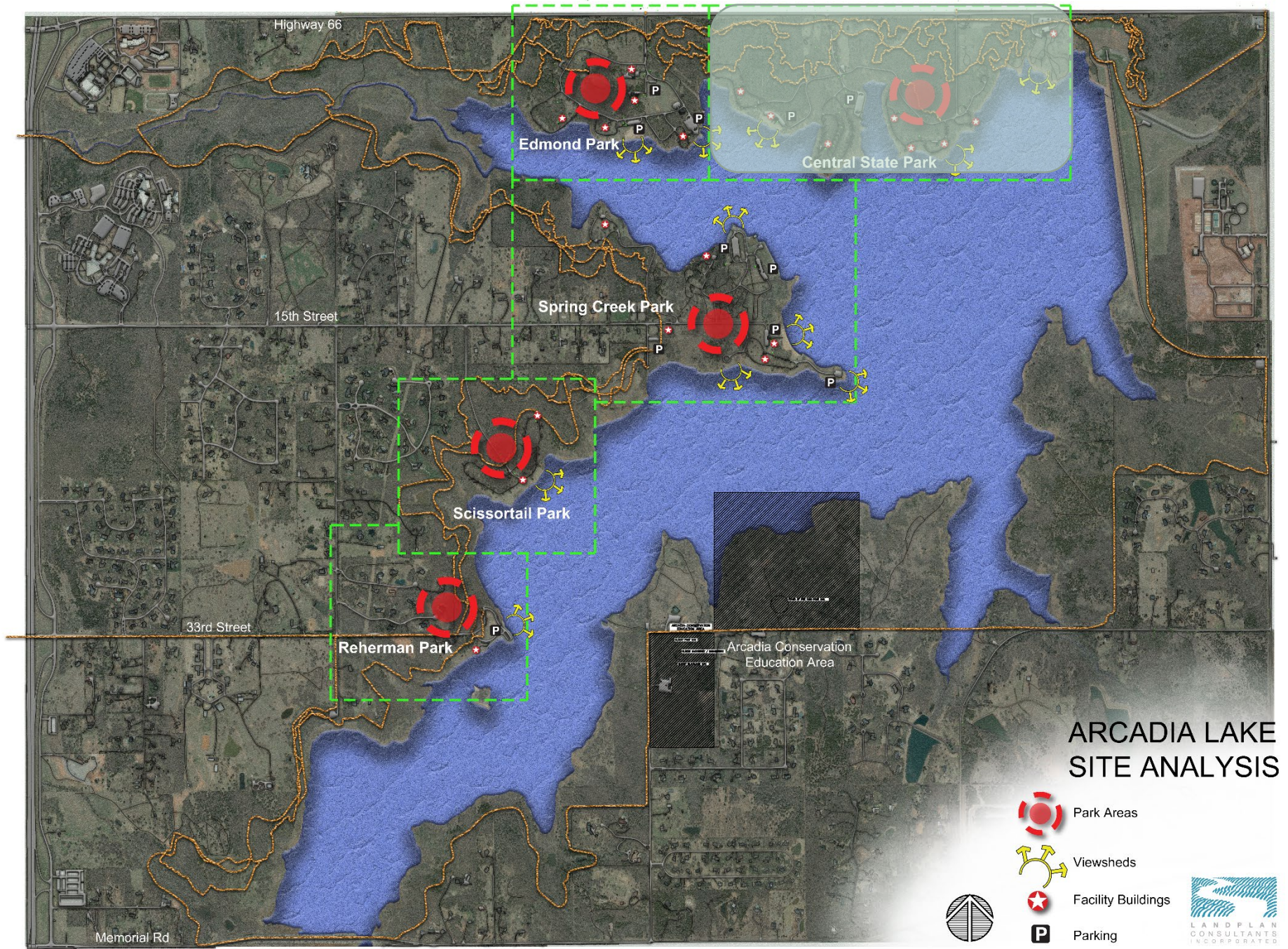
2

3


4

21

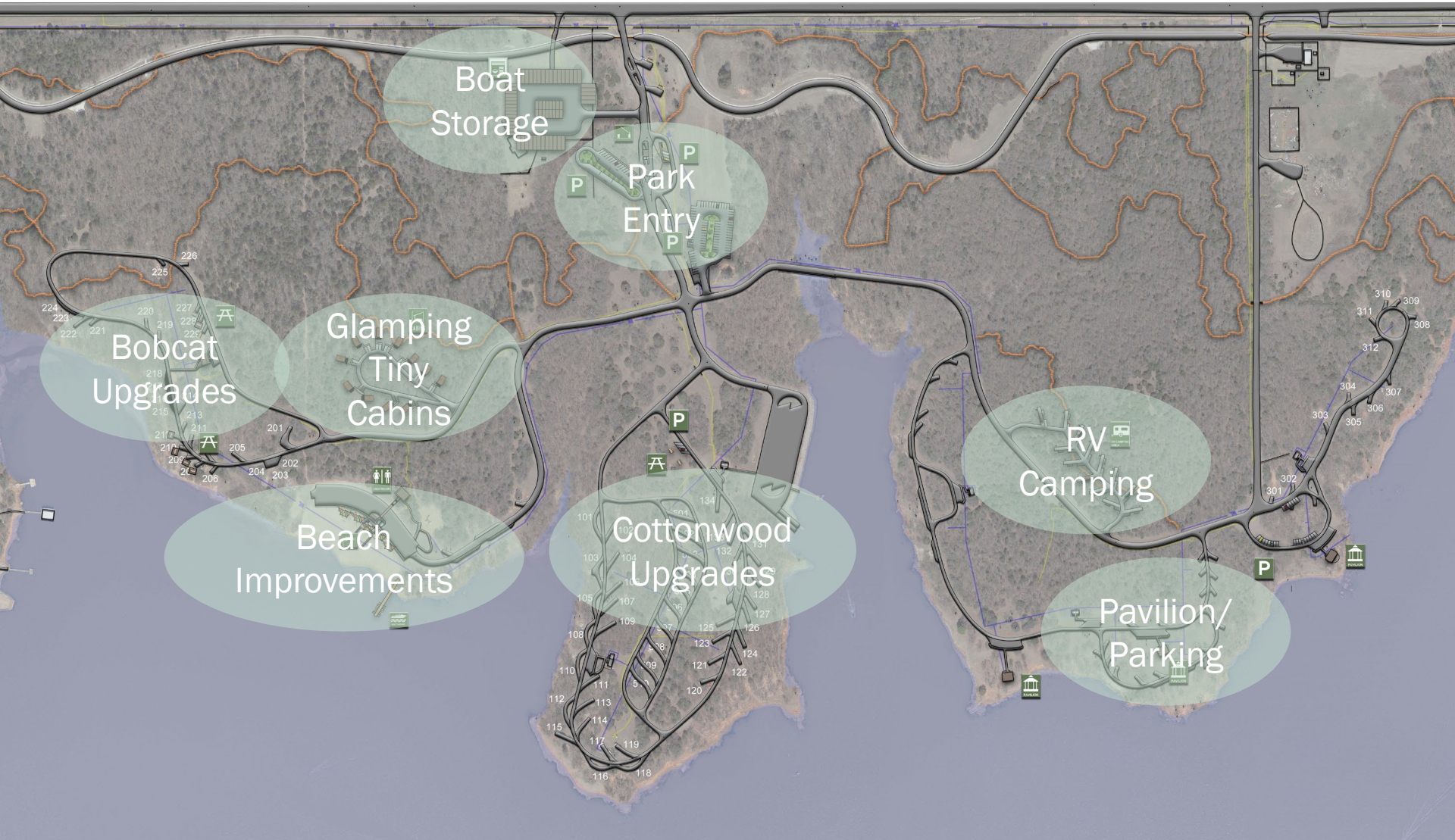




ARCADIA LAKE SITE ANALYSIS

-  Park Areas
-  Viewsheds
-  Facility Buildings
-  Parking





Boat
Storage

Park
Entry

Bobcat
Upgrades

Glamping
Tiny
Cabins

Beach
Improvements

Cottonwood
Upgrades

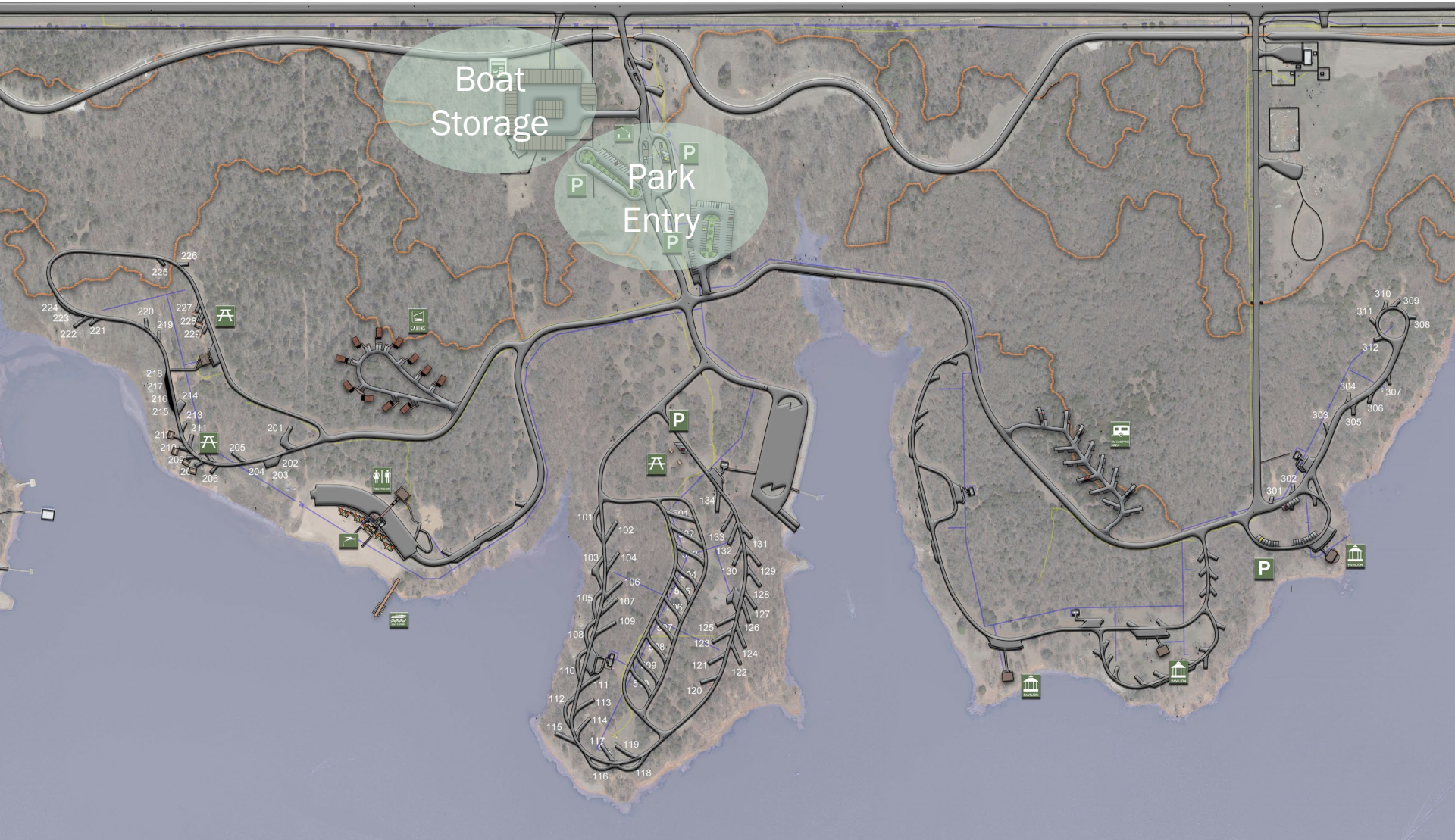
RV
Camping

Pavilion/
Parking

224
223
222
221
220
219
218
217
216
215
214
213
212
211
210
209
208
207
206
205
204
203

101
102
103
104
105
106
107
108
109
110
111
112
113
114
115
116
117
118
119
120
121
122
123
124
125
126
127
128
129
130
131
132
133
134

310
309
308
311
312
307
306
305
304
303
302
301



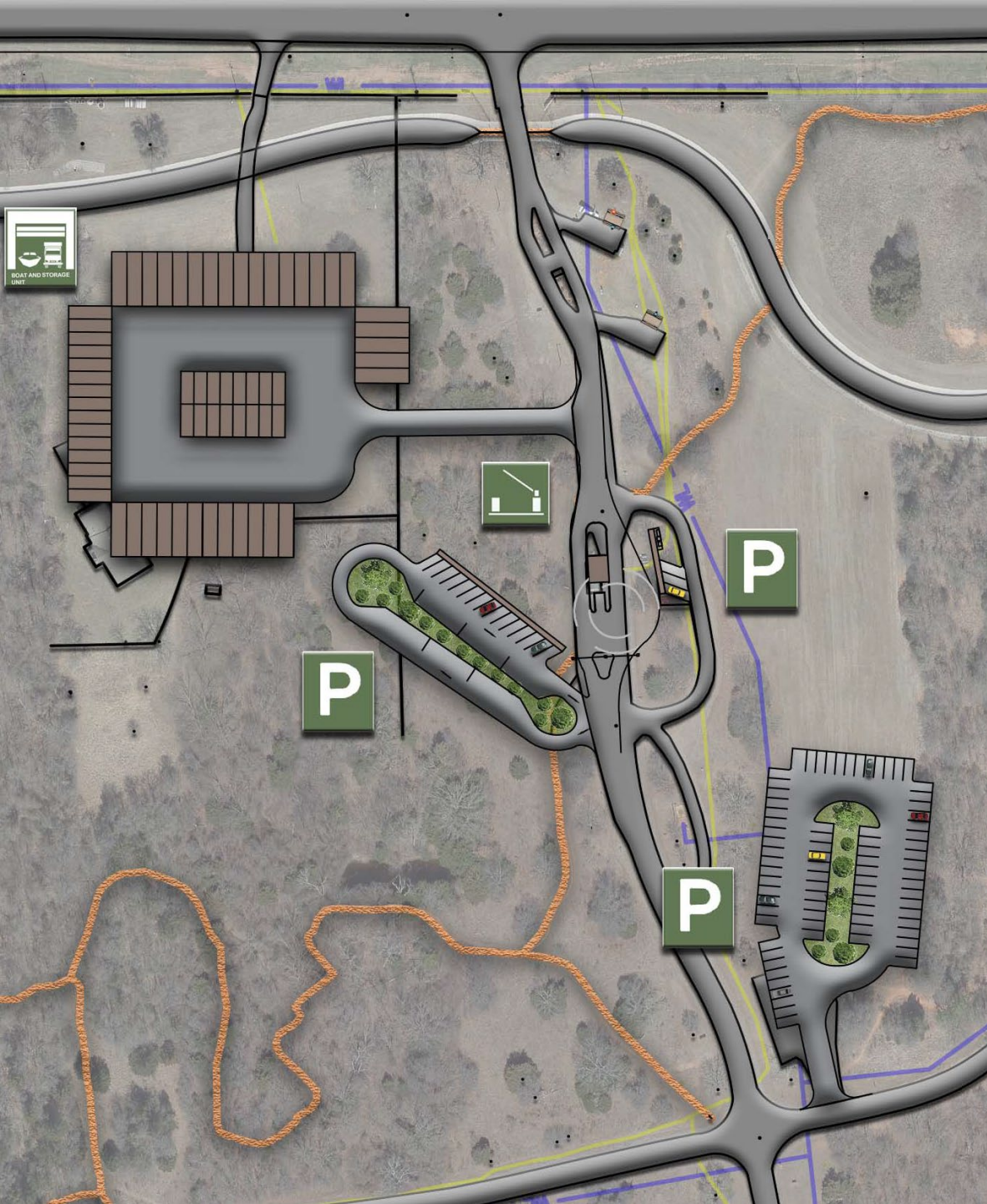
Boat
Storage

P
P
Park
Entry
P

224
223
222
221
220
219
218
217
216
215
214
213
212
211
210
209
208
207
206
205
204
203
202
201

101
102
103
104
105
106
107
108
109
110
111
112
113
114
115
116
117
118
119
120
121
122
123
124
125
126
127
128
129
130
131
132
133
134

310
309
308
312
307
306
305
304
303
302
301
300





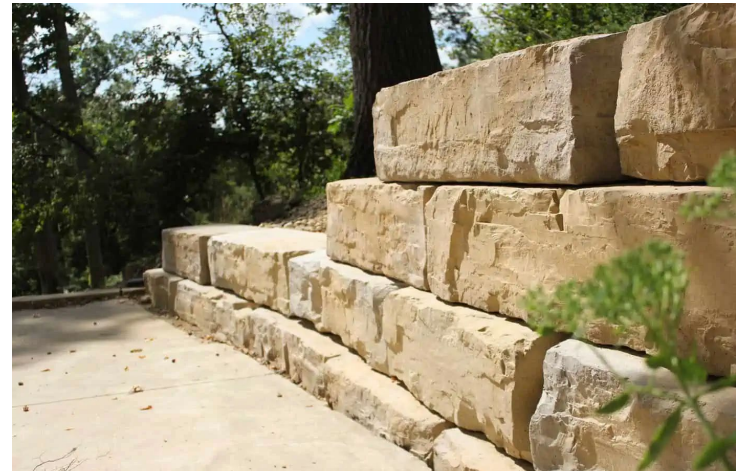
Glamping
Tiny
Cabins

Beach
Improvements



Bobcat Upgrades



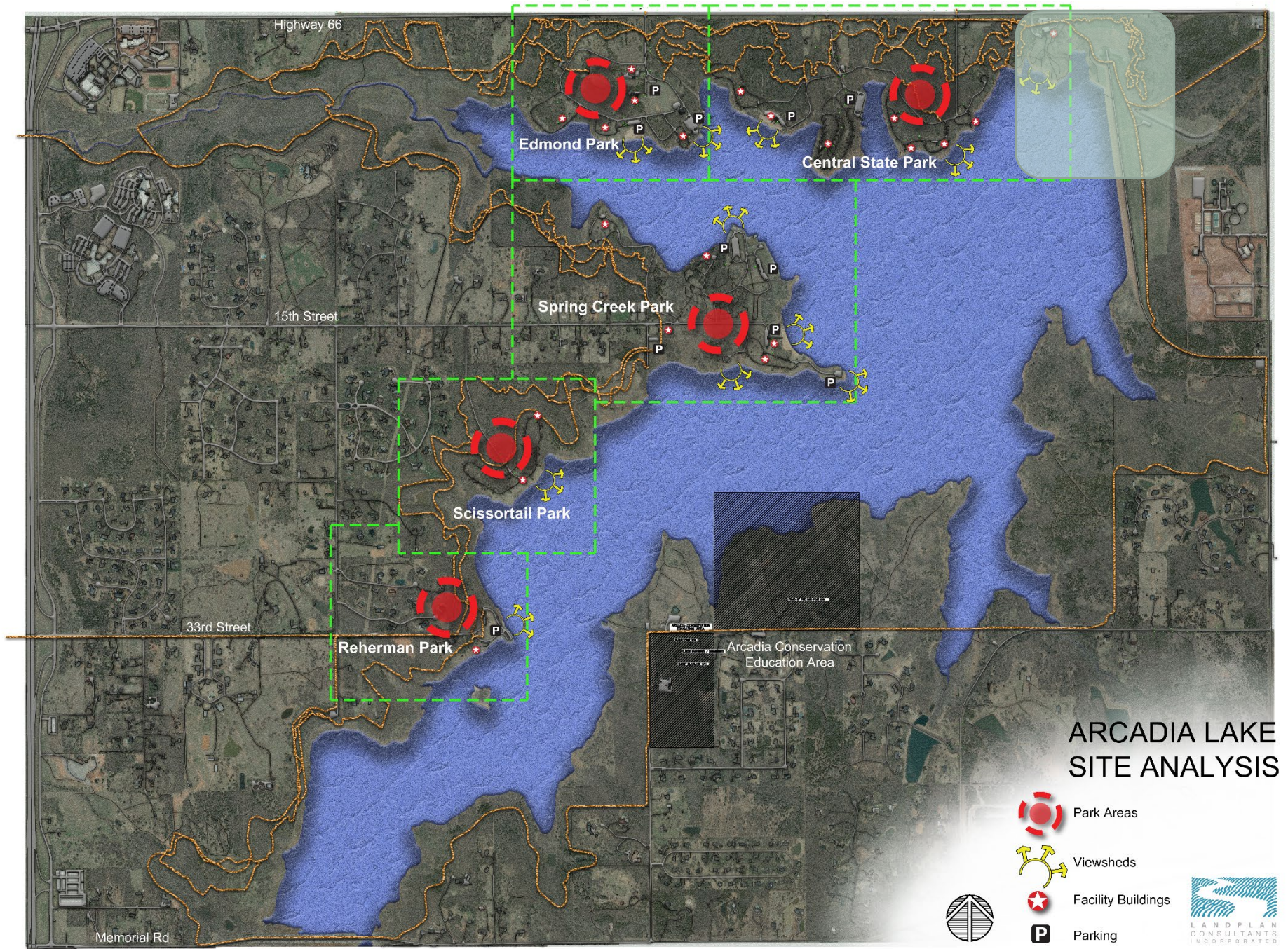




RV
Camping

Pavilion/
Parking

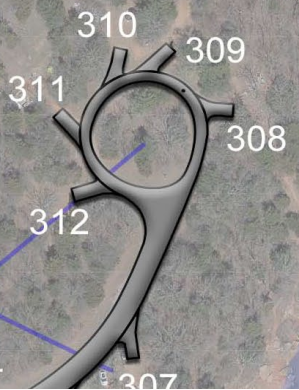


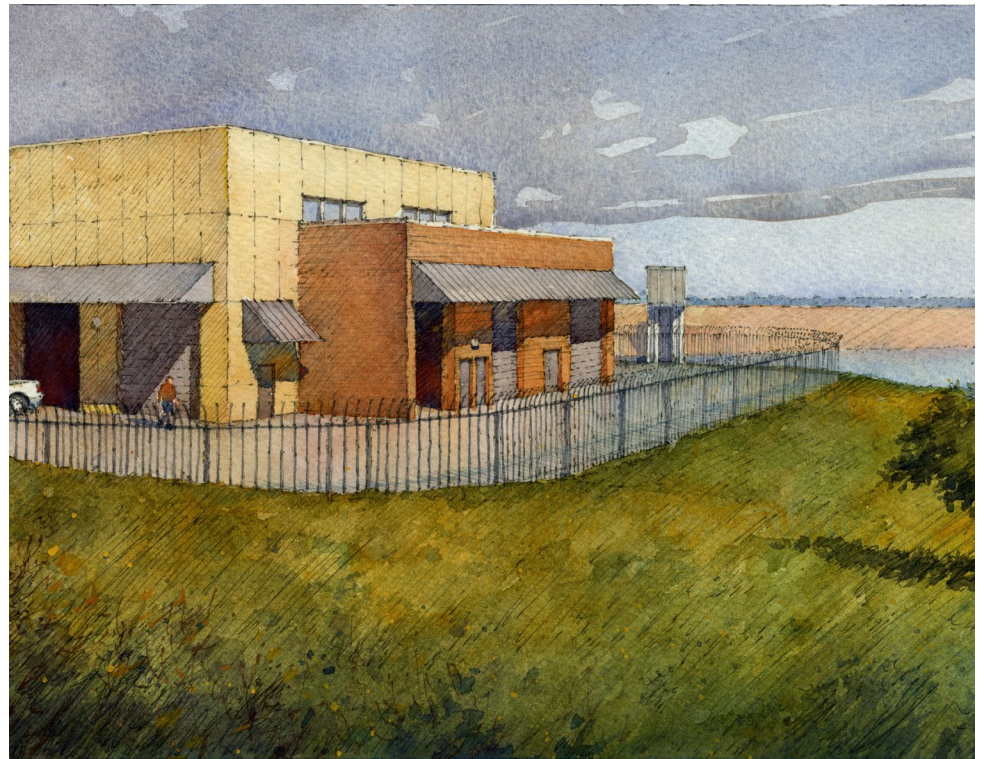
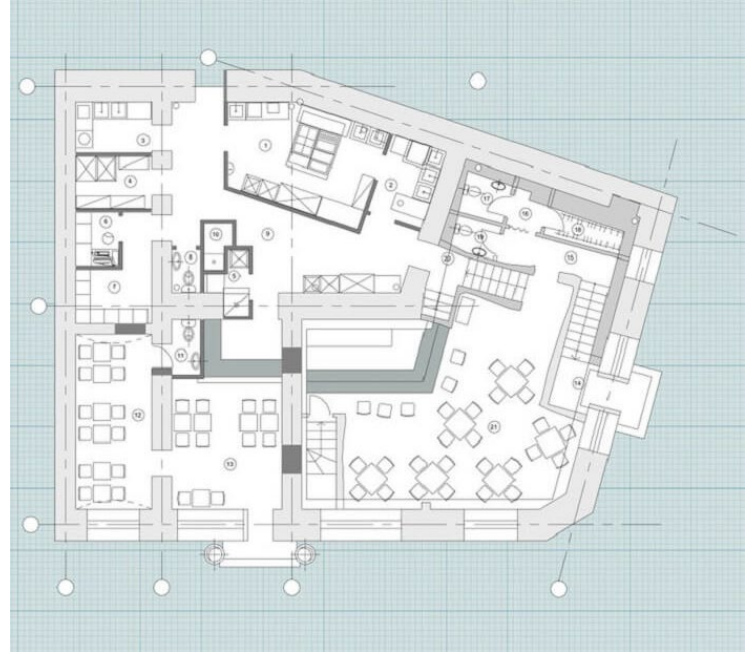


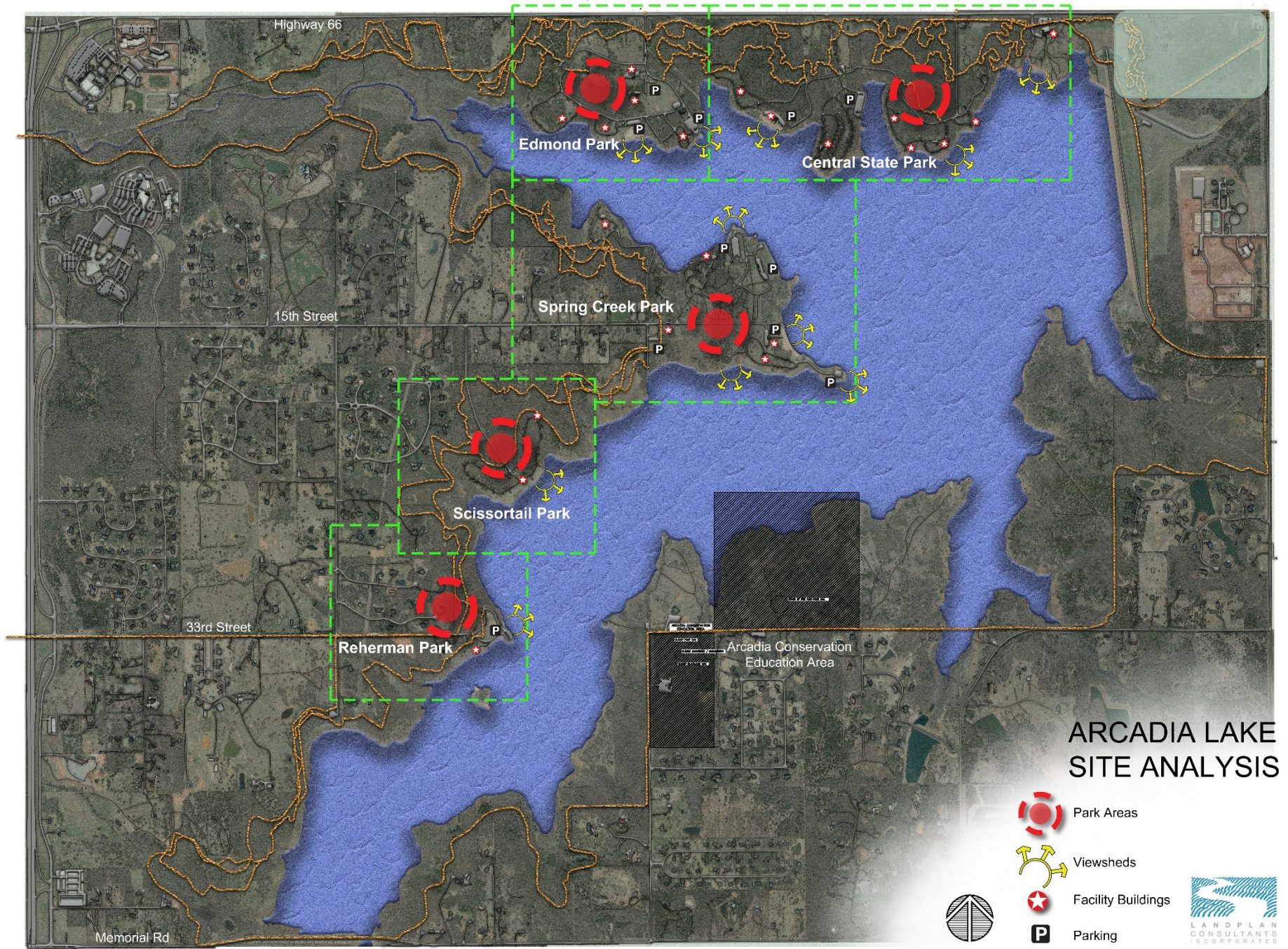
Lakeside
Restaurant




Water
Intake
Facility







ARCADIA LAKE SITE ANALYSIS

-  Park Areas
-  Viewsheds
-  Facility Buildings
-  Parking

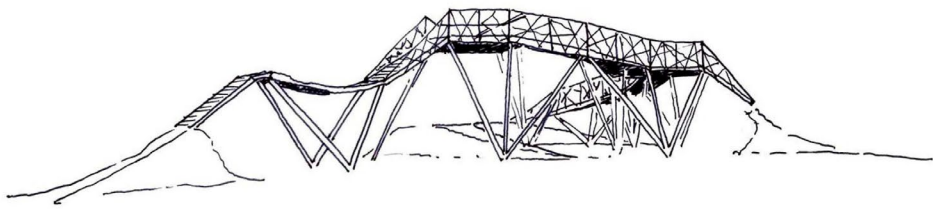
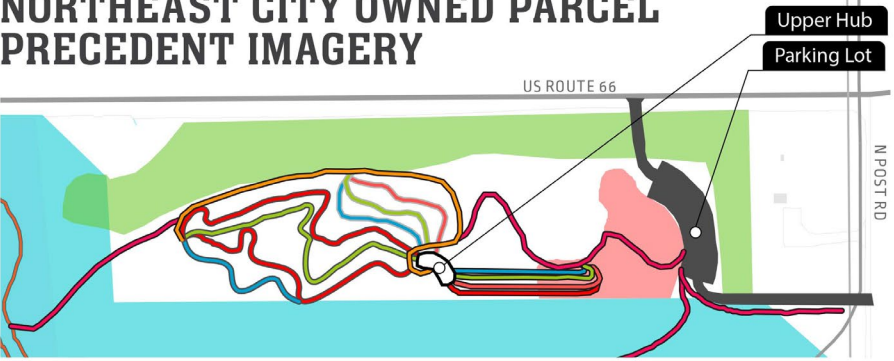








NORTHEAST CITY OWNED PARCEL PRECEDENT IMAGERY



NORTHEAST CITY OWNED PARCEL

DAM

13 ACRE BIKE PARK FOR SCALE REFERENCE

SUB STATIONS

ROUTE 66

N. POS. RD

The site is already primed with base material that needs to be regraded to form the ideal site. Our vision for this is a place for all. Family Park, Bike Park, Cyclocross, Trail Head + Connection to Arcadia Trail Network, Pumptrack, Skills Progression Loops, parking, bathrooms, and more...

Campground Recommendations

Improved
water/
sewer/elec.

Larger/
level
camp sites

New full
hook up
RV sites

Laundry
service

Expanded
Wi-Fi

Online
reservation
system

Expanded
rentals/
park store

Expanded
amenities;
water park,
golf carts

Increased
camping
rates
(22-50%)

Marketing
campaign

Glamping,
yurts, tiny
cabins, etc.

Restroom Recommendations

Scissortail Campground -
shower restroom

Cottonwood Campground -
shower restroom

Central State Beach –
Consider upsizing for
higher use

Spring Creek Beach -
Consider upsizing for
higher use

Edmond Park Beach –
Consider upsizing for
higher use

Edmond Park Camping –
Consider adding a shower

Central State Pavilion area
RR #1 – This restroom
has a lot of issues, but is
not used much so it has
been shut down.

Bobcat Campground –
Consider adding a shower-
29 campsites without a
shower

Spring Creek Boat Ramp –
Consider upsizing to
accommodate Storybook
Forest

Central State Boat Ramp

Kingsnake – Consider
adding a shower

Group Camping Area
restroom

Arrowhead restroom –
Consider upsizing to
accommodate higher use

Central State Pavilion
restroom – Consider
upsizing to accommodate
higher use. Shared by two
pavilions...100plus rent
Seminole at a time.

Spring Creek Pavilion
restroom

Edmond Park Boat Ramp
Restroom

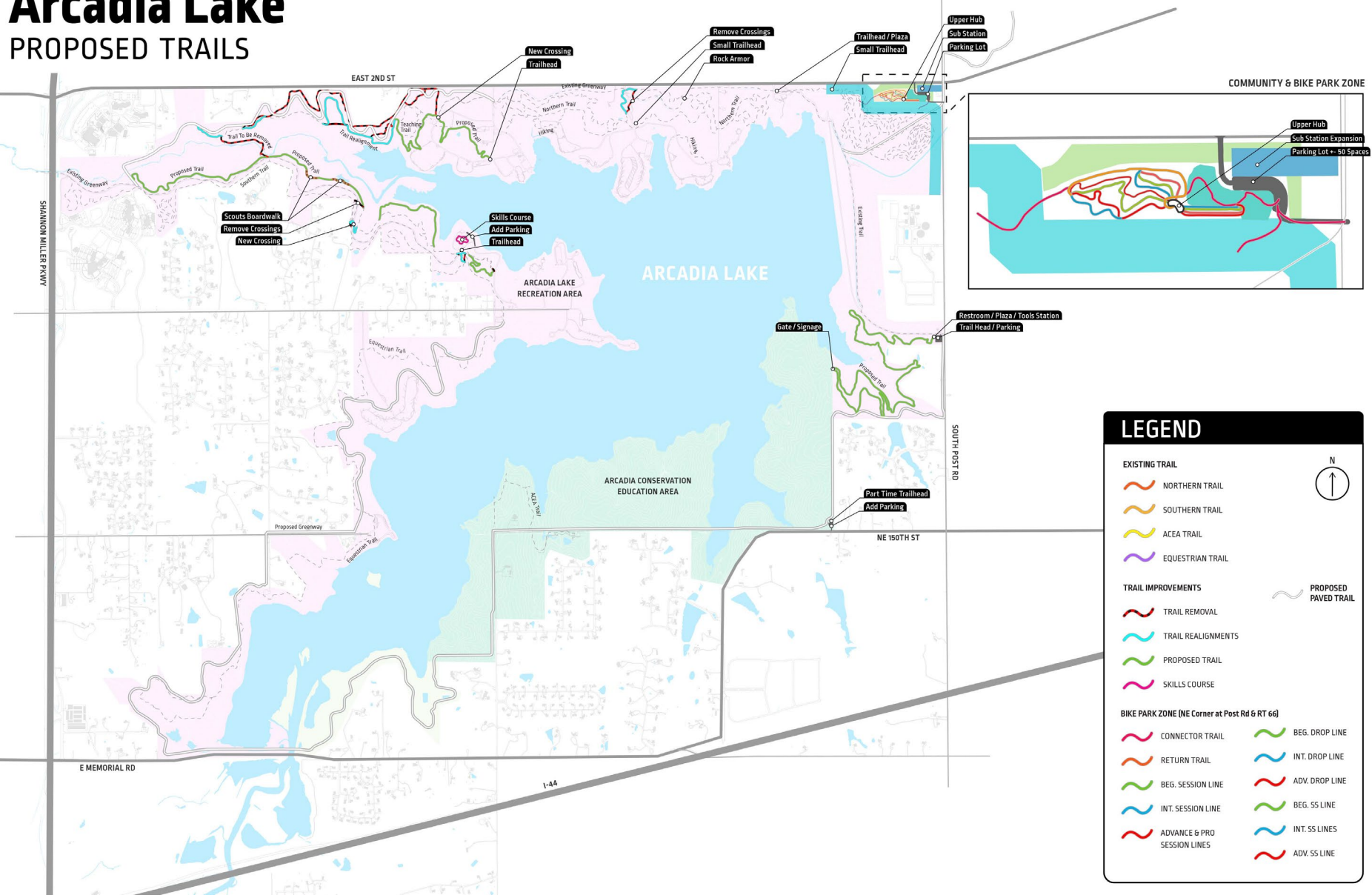
Scissortail Campground
Lower Restroom

Edmond Park Primitive
Area

Spring Creek A-Loop
restroom – Consider
upgrading to a Plumbed rr
instead of a Vault.

Trail Recommendations

Arcadia Lake PROPOSED TRAILS

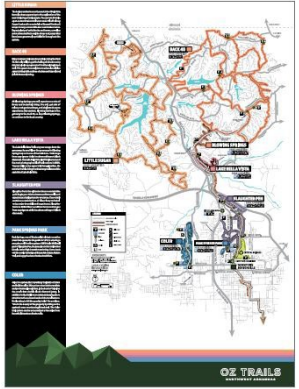
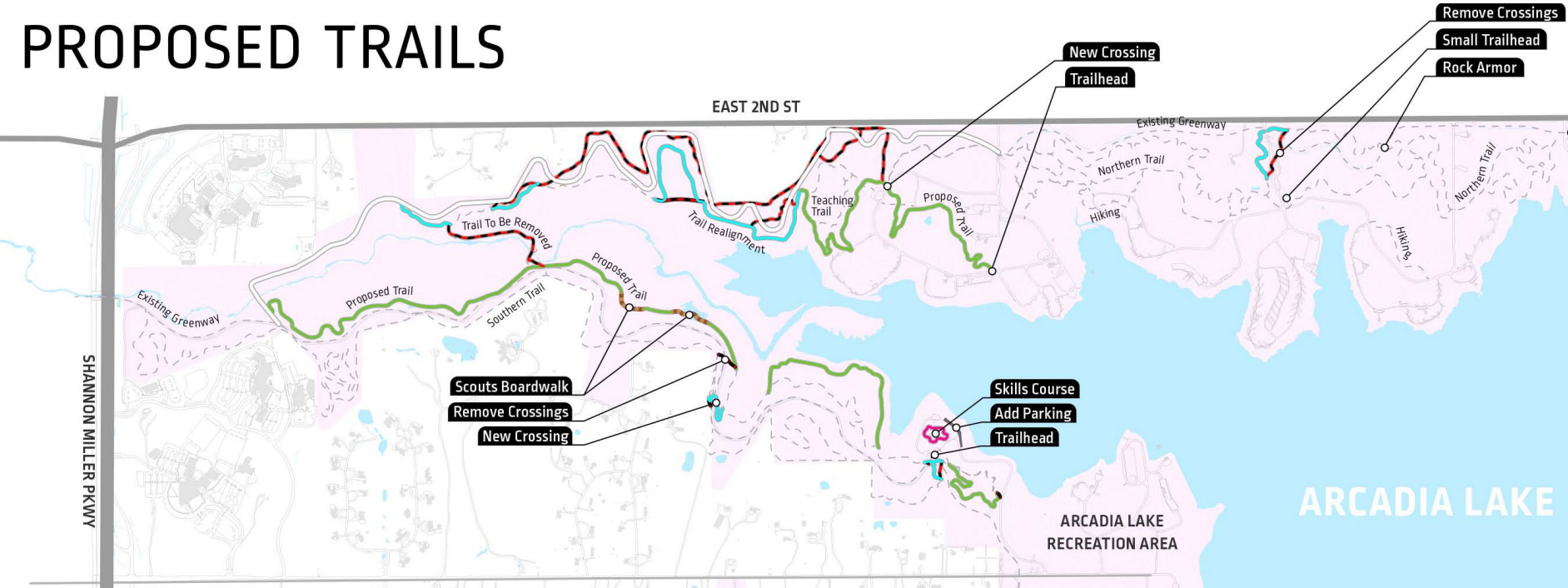


LEGEND

N
↑

EXISTING TRAIL	
	NORTHERN TRAIL
	SOUTHERN TRAIL
	ACEA TRAIL
	EQUESTRIAN TRAIL
TRAIL IMPROVEMENTS	
	TRAIL REMOVAL
	TRAIL REALIGNMENTS
	PROPOSED TRAIL
	SKILLS COURSE
	PROPOSED PAVED TRAIL
BIKE PARK ZONE (NE Corner at Post Rd & RT 66)	
	CONNECTOR TRAIL
	RETURN TRAIL
	BEG. SESSION LINE
	INT. SESSION LINE
	ADVANCE & PRO SESSION LINES
	BEG. DROP LINE
	INT. DROP LINE
	ADV. DROP LINE
	BEG. SS LINE
	INT. SS LINES
	ADV. SS LINE

PROPOSED TRAILS



The background is a blurred image of a pen writing on a document. A line graph is visible, with a peak and a trough. The number '5' is on the left, and '2,47' is on the right. The text 'Next Steps: Financial Analysis and Prioritization' is overlaid in white.

Next Steps: Financial Analysis and Prioritization

FINANCIAL STATE REPORT



Category	FY20 Actual	FY21 Actual	FY22 Actual
Revenue	\$1,346,955	\$1,407,509	\$1,596,996
Expenditures	\$1,653,546	\$1,496,671	\$1,970,043
Net	(\$306,591)	(\$89,162)	(\$373,046)

Cost Recovery	81%	94%	81%
----------------------	------------	------------	------------

Avg. above 90% cost recovery, with an annual deficit of around \$81,000. This average deficit represents approximately 6% of the Lake's annual charges for service revenue, *implying that minimal fee increases* for common services such as daily entrance fees, annual passes, and or camping fees would easily bridge the deficit gap.